



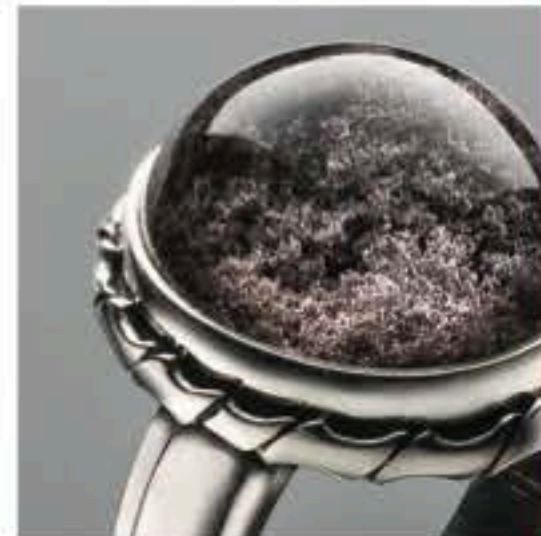
modern art miniatures

Colored Stone's panel of designers share the joys of working with stunning included quartz — and show of some of the creations they've brought forth from this versatile material.

BY KARLA A. ROSENBUSCH, ASSOCIATE EDITOR



TOP: Designer John Bajoras of Village Goldsmith created this necklace with rutile and tourmaline inclusions. Photo by Jim Lawson. CENTER LEFT: Paula Crevoschay's cameo pendant incorporates rutillated quartz. Photo courtesy of Paula Crevoschay. LEFT: Rutillated quartz is also featured in this ring by John Bajoras. Photo by Jim Lawson.



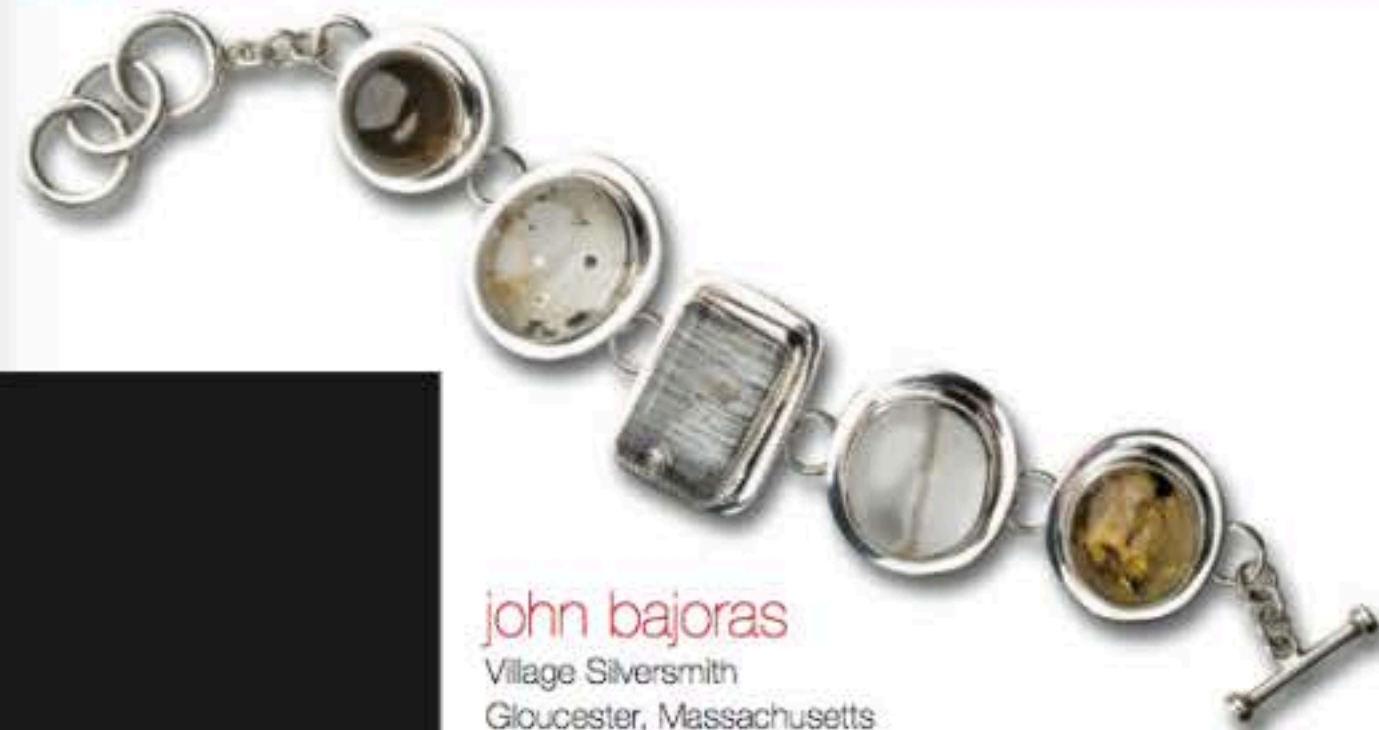
If the Chinese named years after gems rather than animals, 2008 would be the Year of the Quartz. From microcrystalline drusy to monocrystalline rock crystal brimming with mineral inclusions, quartz has captured the imaginations of a whole new generation of designers seeking the ultimate individualization of their work. "No gem offers more variety and possibility than quartz," says drusy quartz master cutter Greg Genovese of Cape May, New Jersey.

For this issue focusing on included quartz, we asked members of our Designer 911 panel to share with us their feelings about this art gem and to let us see some of their favorite designs using it. As the accompanying gem photo atlas shows, there is an amazing variety of included quartz which, in turns, inspires an equally amazing range of designs.

This month's panel consists of: Paula Crevoschay of Mellika Co., Albuquerque, New Mexico; Sharon Curtiss of The Gem Vault, Flemington, New Jersey; Yael Sonia of Merchan Design, New York, New York; and John Bajoras of Village Silversmith in Gloucester, Massachusetts.



ABOVE, LEFT: This "Scenic Garden" ring with chlorite inclusions was designed by John Bajoras. Photo by Jim Lawson. ABOVE: Jason Baskin of The Gem Vault created this pendant with rutillated quartz in sterling silver. Photo courtesy of The Gem Vault. BELOW: A rutillated quartz and diamond ring is part of Yael Sonia's Rock Collection. Photo courtesy of Goldstein Communications.



john bajoras
Village Silversmith
Gloucester, Massachusetts

As a lapidarist, I look for stones that have fine, distinct inclusions that have been oriented properly in the cutting process to bring out the best view of the included crystals while not significantly affecting the final polish by breaking through the surface; the included crystals should be completely encased by the quartz whenever possible. Obviously, in more three-dimensional arrays of rutile for example, this is not always feasible, particularly in the creation of a rutile "cats-eye" stone. The inclusions should be well defined and evenly distributed through the stone, and the quartz itself should also be limpid and watery looking, free of minute inclusions that give it a cloudy appearance.

As a jeweler, I try to take inspiration from the stone itself. For example, in "Scenic Garden" quartz the chlorite inclusions might resemble the bottom of a tidal pool and inspire an undersea motif for the setting, though I am not always that literal in my designs. Golden rutile inclusions allow me to create a gold and silver color combination that is quite popular in jewelry right now while maintaining an all-silver price point. Groups of quartz stones with different types of inclusions might also be put together in a single piece, such as the included quartz bracelet I designed with specimens of five differently included quartzes, or my necklace that combines round domed cabs of golden mutilated and tourmalinated quartz where the shape of the stones is the same, but the inclusions are different. Particularly fine included specimens I tend to set into simple modern settings that do not compete with the stone, making the stone itself the focal point.



ABOVE: This inclusions specimen bracelet by John Bajoras has inclusions of rutile, single needles, goethite, pyrite, and star. FAR LEFT: This pendant has dendritic manganese inclusions. LEFT: Other included quartz pendants designed by John Bajoras have rutile inclusions or chlorite "Scenic Garden" inclusions. Photos by Jim Lawson.